

# THE BLUE WALL WEEKLY

Your Source for Outdoor Activities

Along the Southern Blue Ridge Escarpment

[Gmail messages are clipped.]

Click link on bottom left corner to view entire newsletter.]



## Greetings!

Welcome to the Blue Wall Weekly, your source for what's going on outside along the Southern BlueRidge Escarpment. Feel free to share your own photos, videos, and adventures along the Blue Wall by sending them to the email address at the bottom of the page, and we'll do our best to make you (locally) famous!

---

## Winter

2025 begins, brittle cold. Wind blows through bare branches in fierce, gusty attempts to knock

them loose from trees. This night is incrementally shorter than the one before, the night to follow will be clear, and dark, with stars that sear bright white pinpoints through frigid air. Dawns are golden, afternoons are crisp and cloudless, perfect dog walking weather. After this cold air passes we will listen for the mating call of wood frogs, watch for the nearly imperceptible swell of tree buds. For now, though, winter reigns.  
~K



On January 6th, 2018,  
Lake Jocassee was freezing  
around the edges. Branch tips  
from a fallen tree are visible in the  
clear, cold water.

---

### **SPECIAL EVENTS WITH JOCASSEE LAKE TOURS**

Cabin Fever Tour Book Now!  
January 11: 11:00 AM-2:00 PM

Loons and Winter Birdlife Tour  
Book Now!  
January 18: 11:00 AM-2:00 PM

Winter Waterfalls Tour Book  
Now!  
January 25: 11:00 AM-3:00 PM

**PRIVATE TOURS  
ARE ALWAYS AVAILABLE!**  
[Book Now!](#)

### **WEEKLY EVENTS WITH JOCASSEE LAKE TOURS**

Cool Season Lake Tours  
Tues, Thurs, Sat:  
11:00 AM-2:00 PM Book Now!

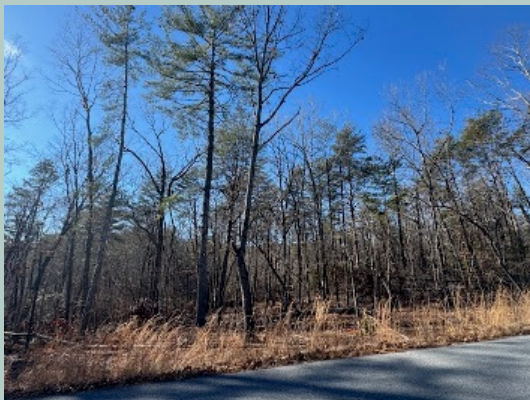
Sunday Afternoon Tours:  
2:00-5:00 PM Book Now!

**CALL OR BOOK ONLINE TO  
RESERVE SEATS**

[\(864\) 280-5501](tel:(864)280-5501)

[www.jocassee-lake-tours.com](http://www.jocassee-lake-tours.com)

---



**Now.**



**Then.**

## **THIS WEEK ON LAKE JOCASSEE JANUARY 6, 2025**

There is such peace at Jocassee this time of year. The silence of the lake is penetrating. And yet there is a certain unavoidable sadness to this time of year as well. Most any drive through the mountains makes evident the uniform youth of the forest throughout the Gorges, which was clearcut in the early part of the last century. In fact the entire SE was clearcut within the last one hundred years or so, from the coastal flood plain cypress and tupelo forests to the richly diverse hardwood forests of the high country. We know of this due to the written history and to the photographs of that era that remain. Without both we would never know what we have wrought on this earth. It is essential that young people know this, know what has been destroyed and yet what can return. It is the long goal of our work here. Working for something we will never see. Work that is dedicated to our children's children. Though there is despair now at what we have done to this place, there is hope as well. It takes both love and patience. So much of both. ~B

### **OUTDOOR EVENTS THIS WEEK, JANUARY 6, 2025**

#### **STATE PARK EVENTS**

##### **Table Rock State Park**

January 11: 2:00-6:00 PM

##### **Music on the Mountain**

Visitors are invited to bring their acoustic instruments and join in a jam session or simply sit back to enjoy the music with the lake and mountains as a beautiful backdrop.

#### **NEW EVENTS**

##### **COMING IN**

##### **JANUARY/FEBRUARY**

##### **STATE PARK EVENTS**

##### **Gorges State Park**

January 25: 2:00-3:30 PM

##### **Winter Seed Sowing Workshop**

## **Gorges State Park**

January 12: 9:00-9:45 AM

### **Evergreens of Gorges**

Come identify some of our most common evergreens and learn about the adaptations that make them suited for the winter season.



Christmas fern,  
Photo by J Mickey

---

## **OTHER OUTDOOR EVENTS**

### **Upstate Forever**

January 9: 5:30-8:00 PM

#### **Advocacy Training: Persuading Through Story**

This is an interactive workshop that will teach Greenville County residents how to advocate for issues through effective storytelling.

### **Keep Oconee Beautiful Association (KOBA)**

January 11: 9:00-11:00 AM

#### **2<sup>nd</sup> Saturday Litter PickUp**

Meet at the Food Lion parking lot at the corner of Hwy 123 and Old Clemson Highway.

### **Sierra Club South Carolina**

January 11: 9:00 AM-12:00 PM

#### **Strategic Planning...with a HIKE too!**

We'll meet in the Holcombe Room (across from the park store) at Devils Fork State Park on Lake

## **Gorges State Park**

January 26: 12:00-12:30 PM

### **Skins and Skulls**

---

## **OTHER OUTDOOR EVENTS**

### **Mushroom Mountain**

January 16: 2:00-3:30 PM

#### **MM Tour**

### **Greenville Natural History Association (GNHA)**

January 18: 9:00 AM-1:00 PM

#### **The Rebooters: Lake Wattacoo**

### **Greenville County Bird Club**

January 18: 8:00-10:30 AM (Shorter Walk)

January 18: 8:00 AM-12:00 PM

#### **Conestee Nature Preserve**

### **Upstate SC Native Plant Society (SCNPS)**

January 21: 6:30-8:00 PM

#### **"Advocacy on the Horizon in 2025"**

### **Mushroom Mountain**

January 21 & 30: 6:30-8:30 PM

#### **Edible Wild Mushroom ID - Southeast Winter and Spring Season (Online Class)**

### **Conserving Carolina**

January 23: 2:00 PM

#### **Etowah Library Speaker Series: Tracks and Signs of Wildlife**

---

### **SC Botanical Garden Event**

January 15: 8:00-9:00 AM

#### **Winged Wednesdays**

January 20: 8:30 AM-3:00 PM

#### **CircleUp STEM Days!**



Jocassee and take a break to hike on the nearby Oconee Bell Trail.

### **Greenville Natural History Association (GNHA)**

January 11: 9:00 AM-2:00 PM

#### **Keowee Toxaway State Park**

Join us for a moderate 4.2 mile hike along a beautiful nature trail that includes a very nice overlook of Lake Keowee and a small hidden waterfall.



**Keowee/Toxaway SP,  
Photo by Luis Garcia**

January 24: 10:00 AM-12:00 PM  
**SCBG Docent Orientations**

---

### **BORROWED GLIMPSES**



**Brooks and Kay out on a recent  
adventure!**

**Photo by Kerry McKenzie**



**Fading, moisture-laden petals of  
witch hazel,**

**Photo by Sue Watts**

---

### **SC Botanical Garden Events**

**More Events Coming Soon!**



**Tipularia discolor Crane fly Orchid**

**THANK YOU for your continuing  
support of Jocassee Wild Child!**

**More kids a'coming in 2025!**

**Donations appreciated!**



Current conditions at Lake  
Jocassee via Devils Fork State  
Park webcam  
Sponsored by Friends of  
Jocassee!

Follow  
Jocassee Wild Child Adventures  
on Facebook!

[https://www.facebook.com/  
jocasseewild](https://www.facebook.com/jocasseewild)

SPONSOR A JOCASSEE WILD  
CHILD TODAY!



---

## **DID YOU KNOW?**

In the 1920s the Appalachian Forest Corporation built a logging railroad into Eastatoe Creek area for the purpose of shipping harvested logs from the mountains to the saw mills of Pickens. The railroad followed the easiest grade into the coves and hollows of the property. The Company's primary interest was to harvest yellow poplar and oak timber that grew in the mountain coves and mid-slopes of these rugged hills. Often times the railroad constructed next to the stream bed itself. Horses were used to skid the logs downhill to the railroad. The large logs were then loaded on rail cars and shipped to the big band saw mills in Pickens where they were sawed into lumber. The smaller logs were sawed at a smaller "circle mill" located on a 14 acre tract of land located where Eastatoe Creek and Smith Creek intersect. A lot of people today know Smith Creek as Mill Shoals. Today remnants of the old railway system (grades and railroad iron) are evident along some of the stream beds. ~From 'History of the Appalachian Lumber Company in Pickens'

---

## **ABOUT THE BLUE WALL**

Spanning three states (North Carolina, South Carolina and Georgia) and encompassing 859,000 acres, the Southern Blue Ridge Escarpment, known as the 'Blue Wall' by Native Americans, contains some of the

highest natural diversity of rare plants and animals found anywhere in the world.

---



[www.JocasseeLakeTours.com](http://www.JocasseeLakeTours.com)

[info@jocasseelaketours.com](mailto:info@jocasseelaketours.com)

Thanks to Sheryl White for compiling the Blue Wall Weekly calendar,  
and to all JLT GUIDES for photos and continuous inspiration!

Jocassee Lake Tours Depart from the Main Dock  
at Devils Fork State Park, 528 Jocassee Lake Road

**PLEASE CALL 864-280-5501 AT LEAST 24 HOURS IN ADVANCE TO  
RESERVE YOUR SEATS!**

---

**SUPPORT OUR JOCASSEE PARTNERS!**

---



JOCASSEE  
REAL ESTATE  
*Dream it. Live it.*

Unsubscribe